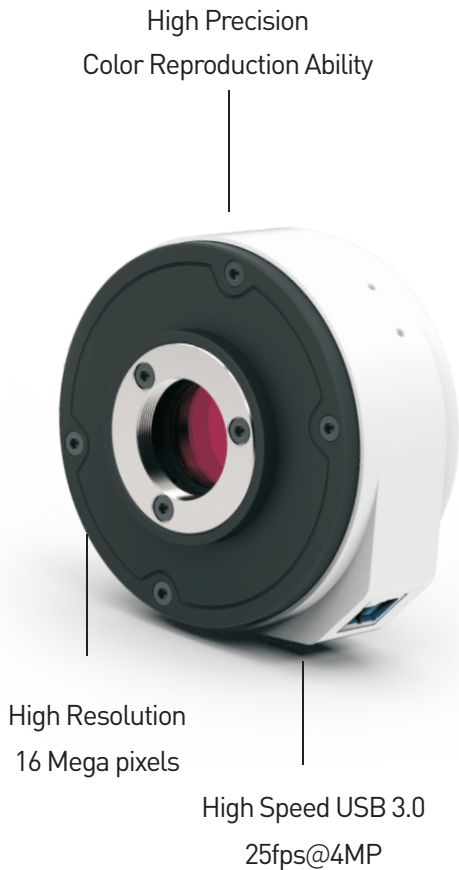
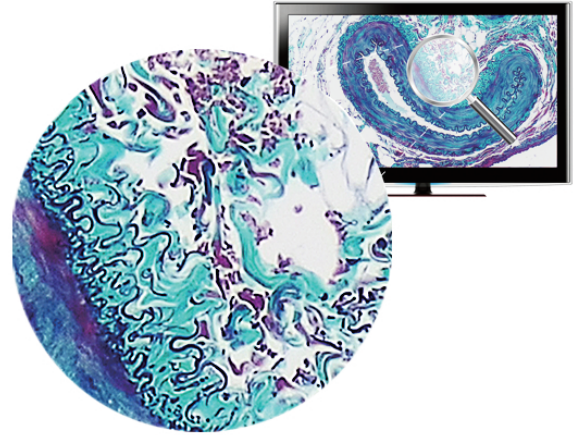




USB3.0 CMOS Camera Built-in ISP

DigiRetina 16

- 16MP high performance scientific camera
- Superb smooth and professional image processor, RAW data output
- Capture sharp images with accurate color rendition
- Range from 1800 to 10000 color temperature option



| Model | DigiRetina 16 | DigiRetina500 | DigiSwift |
|--------------------|--|--|--|
| Sensor | CMOS | CMOS | CMOS |
| Sensor Size | 1/2.33" | 1/2.5" | 1/2.7" |
| Image Processor | Built-in ISP | Built-in ISP | Built-in ISP |
| Image Transmission | High-speed (FPGA+DDR) | High-speed (FPGA+DDR) | High-speed (FPGA+DDR) |
| Pixel Size | 1.335µm x 1.335µm | 2.2µm x 2.2µm | 3µm x 3µm |
| Resolution | 4608x3542, 2304x1728 1600x1200, 1028x960 | 2584x1936, 2040x1528 1592x1192, 1016x760 | 2304x1296 1920x1080 |
| Frame Rate | 5fps@16MP 25fps@4MP 30fps@2MP 30fps@1.2MP | 15fps@5MP 25fps@3MP 30fps@2MP 35fps@0.8MP | 30fps@3MP 30fps@2MP |
| Scan Mode | Progressive | Progressive | Progressive |
| Exposure Time | 1ms-999ms | 1ms-999ms | 1ms-33ms |
| Exposure Mode | Auto/Manual | Auto/Manual | Auto/Manual |
| White Balance | Auto/Manual | Auto/Manual | Auto/Manual |
| Color Temperature | 1800K-10000K | 1800K-10000K | — |
| Noise Reduction | 3D | 3D | 3D |
| Setting | White Balance, Gamma, Noise Reduction, WDR, Exposure Time, Gain. | White Balance, Gamma, Noise Reduction, WDR, Exposure Time, Gain. | White Balance, Gamma, Noise Reduction, WDR, Exposure Time, Gain. |
| Operating TEMP | 0-40°C | 0-40°C | 0-40°C |
| Operating Humidity | 45%-85% | 45%-85% | 45%-85% |
| Compatible System | Window/Linux/Mac | Window/Linux/Mac | Window/Linux/Mac |
| Optical Interface | Standard C-Mount | Standard C-Mount | Standard C-Mount |
| Data Interface | USB3.0, compatible with USB2.0 | USB3.0, compatible with USB2.0 | USB3.0, compatible with USB2.0 |
| PC Software | TCapture | TCapture | TCapture |